

**“The milking machine should remove available milk from the cow’s udder gently, quickly and completely.”**

*The BouMatic Milking Principle*

### **Gently –**

Reducing the milking time may actually be the real definition of gentle milking.

### **Quickly –**

Prep the udder effectively and don’t expose the teat to long periods of high vacuum, at the beginning or at the end of milking, for better teat health and faster milking.

### **Completely –**

Expect high performance and complete milkout with a liner that’s right for your vacuum levels. The ideal liner balances liner slippage and faster milking.

## **BouMatic and “Milkability”**

### **Milkability Goal #1**

Excellent initial and continuing milk letdown. This requires consistent milking procedures, consistent attachment procedures, and consistent unit alignment. The best measure of this goal is the amount of milk produced in the first two minutes.

### **Milkability Goal #2**

Rapid milk flow for the entire milking to minimize unit on time or milking duration. This requires consistent udder preparation and prompt removal upon cessation of milk flow. Typically this means wetter take off settings will be utilized. The best measure for this is average flow in pounds per minute.

### **Milkability Goal #3**

Avoid over-milking. Over-milking occurs two times during a typical milking. If cows are not prepped properly there will be over-milking shortly after the units are attached due to low flow conditions. When take off settings are not adjusted properly, there can be significant over-milking at the end of the milking session.



## Critical points dairy operators need to consider when choosing a liner:

1. What are your goals in the milking parlor? Fewer squawks, faster milking, more complete milkout or something else?
2. Is your pulsation system operating properly?
3. Have you graphed each pulsator in the last month?
4. Does system vacuum level stay within an acceptable range?
5. What are your takeoff settings?
6. What is the general size of the teats on your cows?
7. How are teats and udders prepared for milking?
8. Are there periods of limited milk flow signaling inadequate let down?
9. How heavy is the milking claw you're using?

Take time during milking to observe these important points and your liner selection will be better matched to your cows and your dairy operation.

## Magnum™ M Liners

*Magnum M* Liner Series (U.S. patent #6,631,694). The "M" has a mouthpiece opening that is 2mm larger compared to the standard *Magnum* liner. Another unique feature of the "M" is the tapered barrel to accommodate a wider range of teat sizes.

The *Magnum M* liner is designed to reduce congestion or edema (redness and swelling in the mouthpiece area) while milking a wider range of teat sizes. The "M" liner will be a good choice in herds with larger teats, accustomed to European medium bore liners, or using thin wall liners.

The 400M should have fewer slips than the 500M; the 500M should milk out faster than the 400M. The 400M is best suited for lower claw vacuum systems (11.8-12.0 in. Hg) (38.0-40.6 kPa). The 500M is better suited for higher claw vacuum systems (12.0-12.5 in. Hg) (40.6-42.0 kPa) combined with excellent cow prep. The 600M is intended for Excellent Progressive Dairy Managers who understand less unit "on time", and higher average claw vacuums (12.5-12.7 in. Hg) is gentle, complete and quick milking.



### **Magnum M Liner Series: The Easiest, Smartest Choice for Progressive Dairy Producers**

- Helps reduce liner slips
- Faster milking
- Better milkout
- Heavy-duty and high performance
- Less twisting in the shell

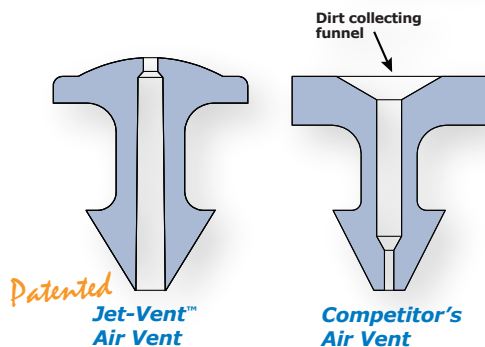
## Unique Features of *Magnum M* Liners

- A series of liners with patented progression in lip thickness of the mouthpiece, and rib-supported wall thickness of the liner barrel which yield predictable performance differences.
- You and your Dealer/Dairy Consultant evaluate and choose what works for your cows.
- Improved mouthpiece contact area keeps liners from twisting. A twisted liner compromises pulsation, proper teat massage, and milking speed.
- Ribs on the outer barrel wall help maintain liner tension and integrity through the entire 1200 cow milking (90 wash) life of liner.
- Heavy-duty structure. The *Magnum M* liner has 22% more rubber than other premium liners.
- Fits all *BouMatic* milking units and stainless steel shells.
- Available with *Jet-Vent™* option, *BouMatic's* patented vent designed to shed dirt and small particles that plug other liner vents.



## How Do You Know Which Liner Provides the Best Balance of Reduced Slippage and Higher Milking Speed for Your Herd?

- *Magnum 400M* will have fewer slips than *Magnum 500M* or *600M*.
- *Magnum 600M* will milk faster than the *Magnum 400M* or *500M*.
- *Magnum 400M* is best for lower system vacuum levels.
- *Magnum 600M* is best for higher system vacuum levels combined with excellent cow-prep procedures.
- The recommended liner for most installations would be the *500M*. If the *500M* results in excess slippage, we recommend changing to the *400M*.
- For faster milkout, change to *600M*.



### **Magnum™ 400M** Reduced Slippage

- Fewer slips
- Best for lower system vacuum levels
- Dairies with good cow-prep procedures

#### ORDER INFORMATION

##### **Magnum 400M**

100 liners/cs.	
Non-vented	8514977
100 liners/cs.	
Vented	8514980

### **Magnum™ 500M** Faster Milkout

- Best for higher system vacuum levels
- Dairies with good to excellent cow-prep procedures
- Recommended liner for most installations

#### ORDER INFORMATION

##### **Magnum 500M**

100 liners/cs.	
Non-vented	8514978
100 liners/cs.	
Vented	8514981

### **Magnum™ 600M** Quick, Gentle Milkout

- Best for higher system vacuum levels
- Where management understands less unit "on time" = gentle, complete and quick milking
- Dairies with excellent cow-prep procedures
- Dairies with wetter takeoff settings

#### ORDER INFORMATION

##### **Magnum 600M**

100 liners/cs.	
Non-vented	8519965
100 liners/cs.	
Vented	8519966

## Magnum™ Liners

Our patented high performance *Magnum* liners are engineered for gentle, quick and complete milk removal. And with the introduction of vents in liners, the dairy industry is realizing how they can improve milkability. Dairy operators are also realizing the advantage of *BouMatic's* patented *Jet-Vent™* and its resistance to plugging.



### Liners That Fit Your Herd

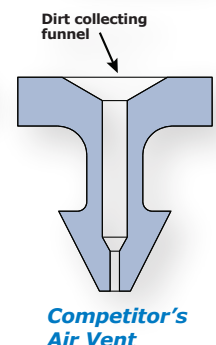
*BouMatic's* *Magnum* Liner is the new standard for liner design. The *Magnum* Liner Series helps you find the right balance between liner slips and milking speed.

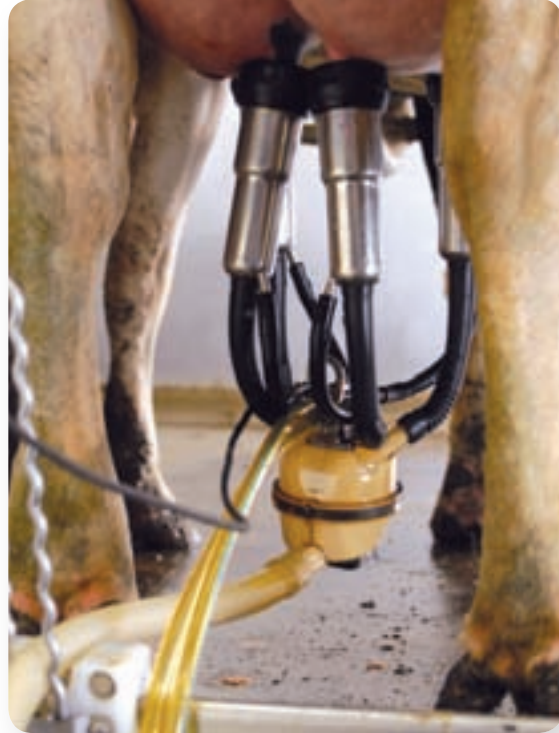
### *Magnum* Liner Series are the Easiest, Smartest Choice for Progressive Dairy Producers

- Helps reduce liner slips
- Faster milking
- Better milkout
- Heavy-duty and high performance
- Less twisting in the shell

### Unique Features of *Magnum* Liners

- A series of liners with patented progression in lip thickness of the mouthpiece, and rib-supported wall thickness of the liner barrel which yield predictable performance differences.
- You and your Dealer/Dairy Consultant evaluate and choose what works for your cows.
- Improved mouthpiece contact area keeps liners from twisting. A twisted liner compromises pulsation, proper teat massage, and milking speed.
- Ribs on the outer barrel wall help maintain liner tension and integrity through the entire 1200 cow milking (90 wash) life of liner.
- Heavy-duty structure. The *Magnum* liner has 22% more rubber than other premium liners.
- Fits all *BouMatic* milking units and stainless steel shells.
- Available with *Jet-Vent™* option, *BouMatic's* patented vent designed to shed dirt and small particles that plug other liner vents.





## **Magnum™ Liners - Model 300 Range** **Reduce Slips**

*Use On:*

- Systems with claw vacuum settings in the 10.5 to 11.5 inches of mercury range
- Dairies with poorer prep and attach procedures
- Dairies with longer milking times and dry detacher settings
- Dairies that prefer getting every drop of milk from the cow and are looking for a liner that will slip less

### **ORDER INFORMATION**

#### **Magnum 300**

100 liners/cs.	
Non-vented	8510890
100 liners/cs.	
Vented	8510891

## **Magnum™ Liners - Model 400-500 Range** **Faster Milkout**

*Use On:*

- Herds with smaller teat sizes
- Systems with claw vacuum settings in the 12.0 to 12.7 inches of mercury range
- Where management is truly interested in shortening unit "on time"
- Dairies with excellent prep and attach procedures
- Dairies under 1000 ohms and above 1.5 lb. per minute for detacher settings
- Where management understands that one pound of residual milk from four quarters after detach is normal
- Where management understands less unit "on time" = gentle, complete and quick milking

### **ORDER INFORMATION**

#### **Magnum 400**

100 liners/cs.	
Non-vented	8510894
100 liners/cs.	
Vented	8510895

#### **Magnum 500**

100 liners/cs.	
Non-vented	8510898
100 liners/cs.	
Vented	8510899

Quality • Durability • Value

## Xpress Liners™

Replacement Liners for Today's Milking Systems

Quality • Durability • Value

High performance liners available exclusively from your *BouMatic* Dealer, *Xpress Liners* provide today's dairy operators with quality materials, superior design and long-lasting durability.

### There is an *Xpress Liner* to Fit...

- Your cows
- Your system
- Your milking style

- *Crossed-Spoke design maintains dome integrity*
- *Rubber compound delivers consistent liner performance*
- *Reinforced milk tube resists wear and damage*
- *Standard or Triangular barrel design*
- *Available with or without BouMatic's patented Jet-Vent™*



*Patented Cross-Spoke Design*

### The *Xpress Liner* Difference

- ***Xpress Liners are GENTLE***  
The specially developed rubber compounds and liner design provide ideal flexibility for additional teat comfort.
- ***Xpress Liners SLIP LESS***  
Patented Crossed Spoke Design maintains dome integrity while reducing slipping and squawks, while still providing faster milkout.
- ***Xpress Liners deliver CONSISTENT PERFORMANCE***  
*Xpress Liners* are made with a rubber compound that delivers consistent performance throughout the life of the liner for top return on your dollar. The reinforced milk tube and Crossed Spoke Design of the dome also maintain the liner's consistent performance.
- ***Xpress Liners are available VENTED or NON-VENTED***  
*Xpress Liner* models are available non-vented or vented with *BouMatic's* patented *Jet-Vent™* air vent. Vented liners are proven to more effectively remove milk from the teat, and the *Jet-Vent™* sheds dirt and small particles more effectively than plug other vents.

## Xpress Liners™

### Non-Vented Replacement Liners

- Crossed-Spoke design maintains dome integrity
- Rubber compound delivers consistent liner performance
- Reinforced milk tube resists wear and damage
- Standard or Triangular barrel design
- Available exclusively from your BouMatic Dealer



#### ORDER INFORMATION

##### Fits DeLaval 06 Shell - 100/Cs.

DL-06-01-LX	8581393
DL-06-08E	8581397
DL-06-01-IDA	8581317
DL-06-01-TLX	8581315

##### Fits BouMatic SS Shell - 100/Cs.

BM-SS-B1U	8581391
BM-SS-B1U-LX	8581395
BM-SS-R1C	8581399
BM-SS-B1-TLX	8581389

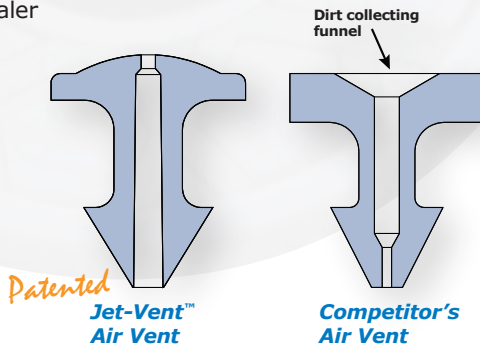
##### Fits Westfalia/Surge Jet-Flo Shell - 100/Cs.

WS-JF-60	8581401
WS-JF-62	8581403
WS-JF-48	8581405
WS-JF-TLX	8581407

## Xpress Liners™

### Vented Replacement Liners

- Crossed-Spoke design maintains dome integrity
- Rubber compound delivers consistent liner performance
- Reinforced milk tube resists wear and damage
- Standard or Triangular barrel design
- Available with BouMatic's high performance Jet-Vent™
- Available exclusively from your BouMatic Dealer



#### ORDER INFORMATION

##### Fits DeLaval 06 Shell - 100/Cs.

DL-06-01-LX	8581394
DL-06-08E	8581398
DL-06-01-IDA	8581318
DL-06-01-TLX	8581316

##### Fits BouMatic SS Shell - 100/Cs.

BM-SS-B1U	8581392
BM-SS-B1U-LX	8581396
BM-SS-R1C	8581400
BM-SS-B1-TLX	8581390

##### Fits Westfalia/Surge Jet-Flo Shell - 100/Cs.

WS-JF-60	8581402
WS-JF-62	8581404
WS-JF-48	8581406
WS-JF-TLX	8581408

## Jetter Cups

- Jetter cups should be replaced annually



#### ORDER INFORMATION

##### DeLaval Style

1-1/2 in.	337360
1-3/8 in.	337350

##### BouMatic Style

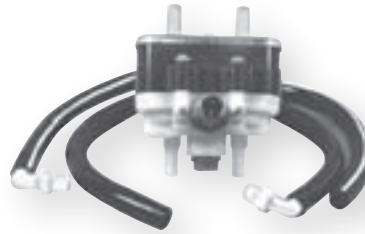
Thin lip w/lock ring	337322
1-5/8 in. thick lip	337340

Thin lip Surge style	337330
New Zealand style	3373116

## Electric Twin Pulsator High Flow

The reliability, durability, low maintenance and flexibility to change rates and ratios make the *BouMatic High Flow Pulsator* the standard for the milking industry.

- Features a molded body and only two moving parts
- Uses twin 1/4 in. (6.4 mm) or 9/32 in. (7.1 mm) tubing
- For permanent mounting without a stallcock, use a dealer supplied 1/2 in. NPT x 2-1/2 in. (63 mm) pipe nipple
- Vacuum port cover must be ordered separately



**8512564 - High Flow Pulsator with Filtered Air Adapters**



**8518294 - High Flow Pulsator**

### ORDER INFORMATION

#### High Flow Pulsator

Pulsator	8518294
Pulsator w/filtered air adapters	8512564

#### Replacement Fresh Air Filter

6.5 x 3 in.	8511740
-------------	---------

#### Vacuum Port Cover

Cover	8518935
-------	---------

## Stall Cock Maintenance Kit To Rebuild Stall Cock

*Kit Includes:*

- Check ball
- Seal
- Contact assemblies and hardware



### ORDER INFORMATION

Single kit	8500704
------------	---------

## Pulsator Maintenance Kit To Rebuild Electric Twin Pulsator

- Contains plunger and other parts necessary to rebuild electric twin pulsator at the recommended 1500 hour interval
- See *Repair Parts Manual* for parts list



**8519015 - Single Electric Pulsator Repair Kit**

### ORDER INFORMATION

#### Electric Pulsator Repair Kit

Single	8519015
10/pkg.	8518943

#### Plunger Repair Kit

12 units (24 plungers)	8509317
------------------------	---------

#### Complete Repair Kit

Single	8509321
--------	---------

#### Pulsator Coil

High flow	8512562
-----------	---------



**8509317 - Plunger Repair Kit**



**8509321 - Single Complete Repair Kit**

## Flo-Star® MAX Milking Unit

### Keeps Short Pulse Tubes Away from Cow's Feet

**Features:**

- Patent 5,586,518 narrow twin air fork helps keep short pulse tubes away from cow's feet
- Crossed inlet design for reduced squawks
- Patent 7,021,239 milk flow pattern reduces agitation and improves milk quality and reduces potential for cross contamination
- Patent 6,981,468 outlet and large capacity means Flo-Star MAX will not flood while milking high-producing cows
- Milk flow into claw is visible from every angle
- Outstanding chemical resistance
- Works on all udder sizes and shapes
- Balanced for equal weight distribution to all teats
- Reversible top for front or rear outlet position
- Available with standard or turned up inlets
- Each Flo-Star MAX includes a narrow twin air fork



**Narrow Twin Air Fork**



**8512558 - Milking Unit without Shutoff Valve**



**8513545 - Milking Unit 5/8 in. Outlet with Turned Up Inlets**



**8512775 - Milking Unit 5/8 in. Outlet with Shutoff Valve and Turned Up Inlets**

**ORDER INFORMATION**

**Milking Unit Assembly without Shutoff Valve (Standard Inlets)**

5/8 in. (16 mm) outlet assy. - accepts 5/8 in. (16 mm) or 3/4 in. (19 mm) milk hose	8512558
3/4 in. (19 mm) outlet assy. - accepts 3/4 in. (19 mm) or 7/8 in. (22 mm) milk hose	8512559

**Milking Unit Assembly (Turned Up Inlets for Air Shut Off)**

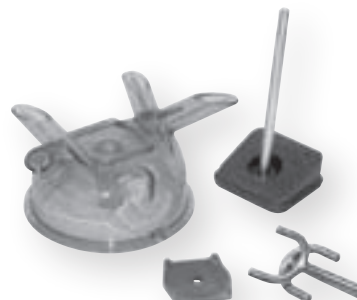
5/8 in. outlet (16 mm) milking unit, top has turned up inlets	8513545
5/8 in. outlet (16 mm) milking unit, w/shutoff valve & turned up inlets	8512775

## Top Upgrade Kits/ Replacement Tops

Convert Flo-Star Classic or Original Claws to the Flo-Star® MAX Top



**8513544 - MAX Top with Turned Up Inlets**



**8513546 - MAX Top Kit**

**ORDER INFORMATION**

**MAX Replacement Top (also Fits Classic Claw)**

w/Standard inlets	8512527
w/Turned up inlets for air shut off	8513544

**Max Top Kit (for Upgrading Flo-Star Original Claw)**

Includes turned up top, air fork, bumper & stud, & air fork adapter	8513546
---	---------

## Jetter Cups

- Jetter cups should be replaced annually



8510177 • 8503691 • 8503692

8503023 • 8503022

8514723 • 8510176

### ORDER INFORMATION

#### Jetter Cups

R/Mag series	8503022
DK series/RMI	8503023
Short, R/ Mag series	8503691
Short, DK series/RMI	8503692
Competitive Short	8510176
competitive	8510177
Original style	8514723

#### Check Valve

Duck-bill	8517844
-----------	---------

## Flo-Star® Milking Unit Accessories

### Gasket Kits Fit Original, Classic, or MAX Flo-Star Units

- All rubber components
- Should be replaced annually



8506724 - Flo-Star MAX Gasket Kit with Valve

### ORDER INFORMATION

#### Flo-Star Claw Gasket Kit

Without valve, 10/pkg.	8506723
With valve, 10/pkg.	8506724

#### Valve Brush

To clean shutoff valves	8506914
----------------------------	---------

## Hose Retention Ring

### Holds Twin Pulsation Hose

- Holds twin pulsation hose to 5/8 in. (16 mm) milkhose
- Triangular shape resists rolling



### ORDER INFORMATION

Hose retention ring	8513217
------------------------	---------

## Stainless Steel Shells

### Shells only



### ORDER INFORMATION

SS shell	8517327
----------	---------

## Flo-Star® MAX Combo Kit

Consists of:

- 24 Flo-Star MAX milking units, 5/8 in. with turned up inlets (8513545)
- 100 short air tubes (8512007)
- 96 stainless steel shells (8517327)
- 100 Magnum or Magnum M liners



Flo-Star MAX Combo Kit

### ORDER INFORMATION

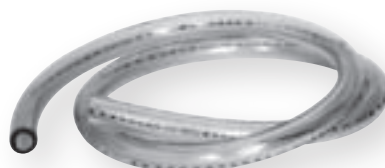
MAX Combo, Turned Up Inlet Top, 5/8 in. Outlet	
w/Magnum 300	8514151
w/Magnum 300 Vented	8514153
w/Magnum 400	8514155
w/Magnum 400 Vented	8514157

MAX Combo, Turned Up Top, 5/8 in. Outlet	
w/Magnum 400M	8581004
w/Magnum 400M Vented	8581005
w/Magnum 500M	8581006
w/Magnum 500M Vented	8581007

## BouMatic Milk Hose

### Exclusive BouMatic Labeled Clear Plastic Milk Hose

- Gives excellent visual identity
- BouMatic name repeats every 12 in. for easy measurement
- Meets all 3-A Sanitary Standards for Raw Milk Service
- More flexible and pliable at low temperatures
- All rolls are on spools for convenience



8590220 - 9/16 in. BouMatic Labeled Clear Plastic Milk Hose

### ORDER INFORMATION

PART NUMBER REPRESENTS THE FULL ROLL

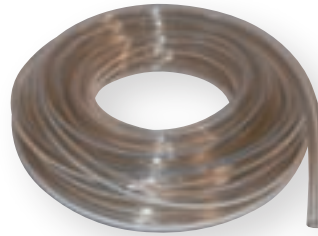
BouMatic Clear Plastic		
Inside Dia.	Length	
9/16 in.	140 ft.	8590220
5/8 in.	140 ft.	8590222
5/8 in.	500 ft.	8590224

## Standard Milk Hose

Industry Standard,  
Transparent Milk Hose



3553786 - 5/8 in. Standard Rubber Milk Hose



8590210 - 5/8 in. Standard Plastic Milk Hose

### ORDER INFORMATION

PART NUMBER REPRESENTS ONE ROLL

#### Standard Plastic

Inside Dia.	Length	Part Number
1/2 in.	100 ft.	4160120
9/16 in.	100 ft.	8507400
5/8 in.	100 ft.	8590210
7/8 in.	50 ft.	41627805
7/8 in.	100 ft.	4162780
1 in.	100 ft.	4162010

PART NUMBER REPRESENTS ONE FOOT, EXCEPT WHEN DESIGNATED AS A ROLL, ORDER IN GIVEN MULTIPLES

#### Standard Rubber

Inside Dia.	Multiples	Part Number
5/8 in.	50 ft.	3553786

## Silicone Milk Hose

- Stays flexible at low temperatures and has a long life
- Not recommended for use in parlors with floor grates



8515287 - 5/8 in. Silicone Milk Hose

### ORDER INFORMATION

PART NUMBER REPRESENTS ONE ROLL

#### Silicone

Inside Dia.	Length	Part Number
5/8 in.	100 ft.	8515287
3/4 in.	100 ft.	8516039

## Thin-Wall Drain Hose



8511964 - 3/8 in. Drain Hose

### ORDER INFORMATION

PART NUMBER REPRESENTS ONE FOOT, ORDER IN GIVEN MULTIPLES

Inside Dia.	Multiples	Part Number
3/16 in.	100 ft.	8505032
1/4 in.	100 ft.	4020210
3/8 in.	100 ft.	8511964

## Reinforced Plastic Hose

Replacement Hose for  
PW-100 Pipeline Washer

- Clear Vinyl Hose
- With Braided Reinforcement



8507534 - 3/8 in. Reinforced Plastic PVC Hose

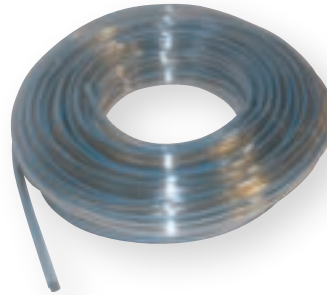
### ORDER INFORMATION

PART NUMBER REPRESENTS ONE 100 FOOT ROLL

#### Plastic

Inside Dia.	Multiples	Part Number
3/8 in.	100 ft.	8507534
1/2 in.	100 ft.	8505785

## Pulsation Vacuum Hose



8518000 - 1/4 in. Pulsation Vacuum Hose

### ORDER INFORMATION

PART NUMBER REPRESENTS ONE FOOT, EXCEPT WHEN DESIGNATED AS A ROLL, ORDER IN GIVEN MULTIPLES

#### Single Plastic

Inside		
Dia.	Multiples	
1/4 in.	100 ft.	8506904
3/8 in. b/w	100 ft.	8506805

#### Twin Plastic

Inside		
Dia.	Multiples	
1/4 in.	100 ft.	8518000
1/4 in.	500 ft. roll	8518010
9/32 in.	100 ft. roll	8518021
9/32 in.	500 ft. roll	8518022

#### Single Rubber

Inside		
Dia.	Multiples	
1/4 in.	50 ft.	8506700

## Short Pulse (Air) Tubes

### Rubber

- Consult the "Milking Clusters" section of the *BouMatic Guidelines Manual* for recommended usage of air and milk tubes.

8506733 - 9 in. Pulse Tube



8506732 - 7.5 in. Pulse Tube

### ORDER INFORMATION

#### 6.5 In. Rubber

8/pkg.	8501387
50 pkg./cs.	8501388

#### 7.5 In. Rubber

8/pkg.	8506732
50 pkg./cs.	8540159

#### 9 In. Rubber

8/pkg.	8506733
50 pkg./cs.	8540158

### Clear Plastic

- Consult the "Milking Clusters" section of the *BouMatic Guidelines Manual* for recommended usage of air and milk tubes.

8512006 - 9 in. Pulse Tube



8512005 - 7 in. Pulse Tube

#### 7 In. Clear Plastic

1 tube	8512005
100/cs.	8512007

#### 9 In. Clear Plastic

1 tube	8512006
100/cs.	8512008

## BouMatic Filters

### BouMatic Offers the Highest Quality Filter on the Market

- Professional strength - commercial duty
- Made with the finest material and workmanship
- Full money back guarantee against breakage



### ORDER INFORMATION

#### Filter Sock

2-1/4 x 24 in., 100/bx.	
6 bx./cs.	8504028
2 x 24 in., 100/bx.	
6 bx./cs.	8504029
3 x 23-3/8 in., 100/bx.	
6 bx./cs.	8504030
4-7/8 x 33-1/2 in., 50/bx., 9 bx./cs.	8504031

#### Filter Tube

4-7/8 x 33-1/2 in., 50/bx., 9 bx./cs.	8504033
---------------------------------------	---------

## Air-Star Gearbox Oils

### Specially Formulated Lubricants for Air-Star Vacuum Pump Gearboxes

- Rust and oxidation inhibitors
- Anti-foam additives, non-detergent
- Flush and replace gearbox lubricant every 1500 hours of operation



#### ORDER INFORMATION

1 gal.  
petroleum oil 8553787

## Air-Star Bearing Grease

### Special High Temperature Grease in Standard Grease Gun Cartridge

- Non corrosive
- Extreme pressure grease
- Lubricate drive bearings every 500 hours of operation



#### ORDER INFORMATION

14 oz.  
cartridge 8507413

## Revitalobe

### Lobe Pump Wash and Treatment

- Extends life and performance
- Pumps run quieter and more efficiently
- Biodegradable with all natural ingredients
- Flush pumps every 3 months or 500 hours



#### ORDER INFORMATION

4-1 gal./cs. 8523848  
5 gal. pail 8523849

## Oil Vane Pump Flushing Oil

### Prevents Buildup on Rotors and End Plates

- Flush per *Vacuum Pump Instruction Manual* to keep vanes free
- One case includes six 1 gallon containers, 28 cases per pallet



#### ORDER INFORMATION

6-1 gal./cs. 8591066

## Oil Vane Vacuum Pump Oil

### Specially Formulated, High Quality, Gum Free Oil for Use in Rotary Vane Vacuum Pumps

- Red tint with low pour additive



#### ORDER INFORMATION

6-1 gal./cs. 8503715  
5 gallons 8503716  
55 gal. drum 8503717

8503716 -  
5 gallons